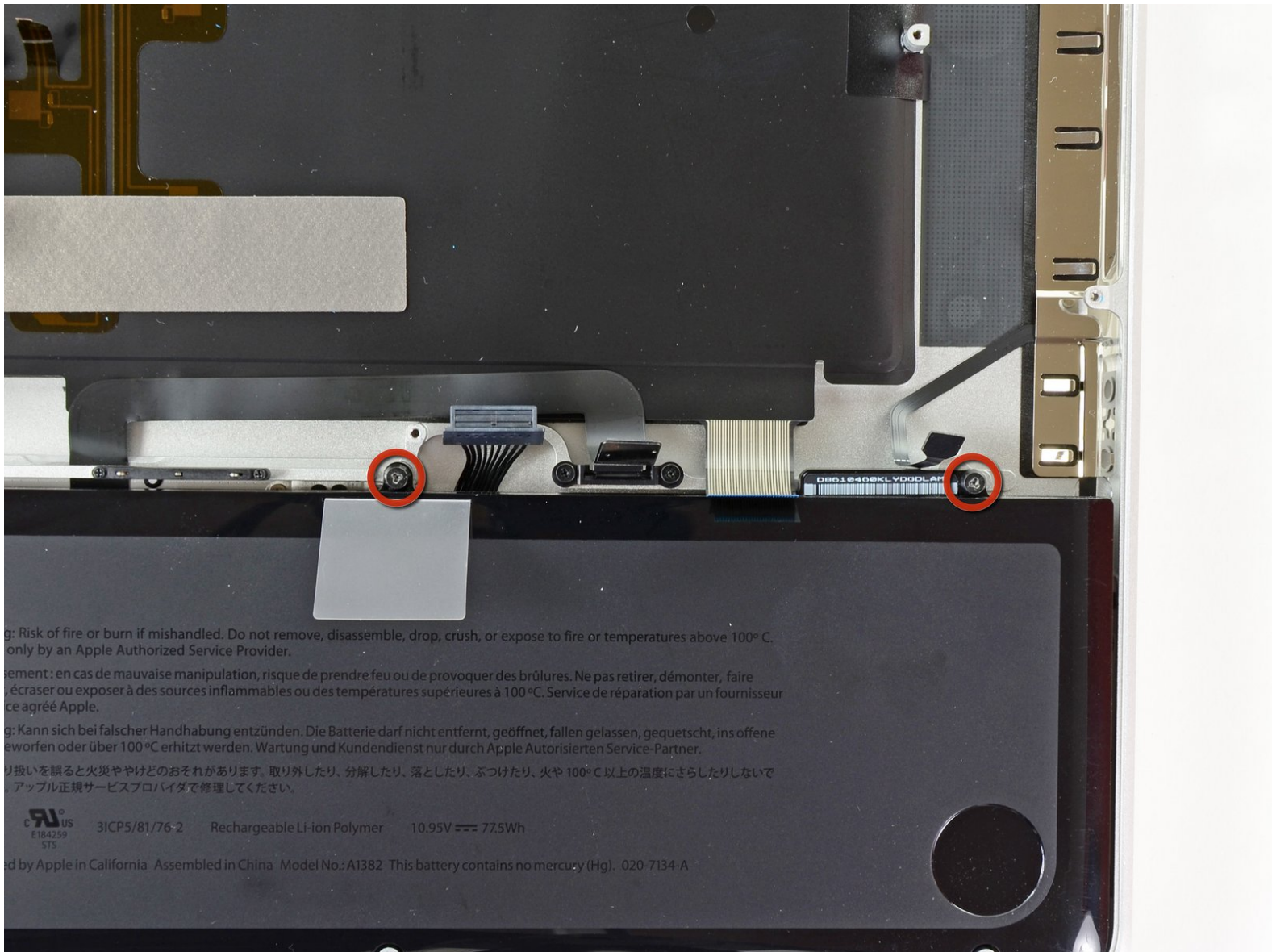




MacBook Pro 15" Unibody Early 2011 Battery Replacement

Prerequisite guide to remove the battery after the logic board has been removed. Used in trackpad removal guide.

Written By: Andrew Optimus Goldheart



This document was generated on 2019-09-18 11:22:33 PM (MST).



TOOLS:

- [Tri-point Y0 Screwdriver](#) (1)
-

Step 1 — Battery



- Remove the two 7.5 mm (7.2 mm) Tri-point screws securing the battery to the upper case.

Step 2



- Carefully peel the battery warning label off the upper case between the battery and the optical drive to reveal an additional Tri-point screw.
- Remove the last 7.5 mm (7.2 mm) Tri-point screw securing the battery to the upper case.

⚠ Do not remove the label from the battery.

Step 3



- Use the attached plastic pull tab to remove the battery from the upper case.

To reassemble your device, follow these instructions in reverse order.